

2nd CITIZEN PARTICIPATION PROCESS

#

RETRIEVAL AND
DEFINITION OF THE USES
FROM THE CULTURAL CENTRE
IN CORRÓ D'AVALL

CULTURAL CENTRE

C O R R Ó D ' A V A L L



The purpose of the 2nd Citizen Participation Process is to boost the retrieval of the Cultural Centre in Corró d'Avall through the development of a uses design which fits within the town requirements and be the answer to all "Franquesin" people desires.





What you have in your hands is the booklet regarding the 2nd Citizen Participation Process for the retrieval of the Cultural Centre in Corró d'Avall, which we have started and for which I encourage you to take part.

The desire from the government team which I head is that the Cultural Centre in Corró d'Avall, which currently is in a progressive degradation process, becomes a modern building that responds to the true needs of the whole town.

That is why it is very important that all the “Franquesin” people make a thorough reflection about what the town needs in order to define through a wide agreement what kind of uses we want to give to it.

In this way we find some technical limitations, such as the half-structure already built, apart from other economical limitations. Now we are planning “Les Franqueses” from the present into the future. The outcome from this Participation Process will reflect the citizen desire and will be the road to follow in the development of this project as soon as the economy allows. In this sense, we will try to join efforts and desires so that we can finish this project in a dignified but realistic way, considering the current possibilities.

I am sure that with all the “Franquesin” citizen contributions together with all of your ideas and reflections, we will go on designing a present and a future more proportional to everyone.

Francesc Colomé i Tenas
Mayor



REFLOATING

THE PROJECT







The building as planned in that moment, was started to be built as a Cultural Centre in Corró d'Avall; it is located in a ground (whose area is of 6.943,36 sqm), surrounded by houses inside a complete urban area: among Carrers Tagamanent, Onze de Setembre and Verge de Montserrat.





Near this place there are also other buildings such as the Cultural Centre Can Ganduxer, El Til·ler Institute or Joan Sanpera i Torras School. Originally the project included a theatre auditorium, a library, a multipurpose space and a cafeteria and restaurant. The works started in July 2007, and were stopped in August 2008.

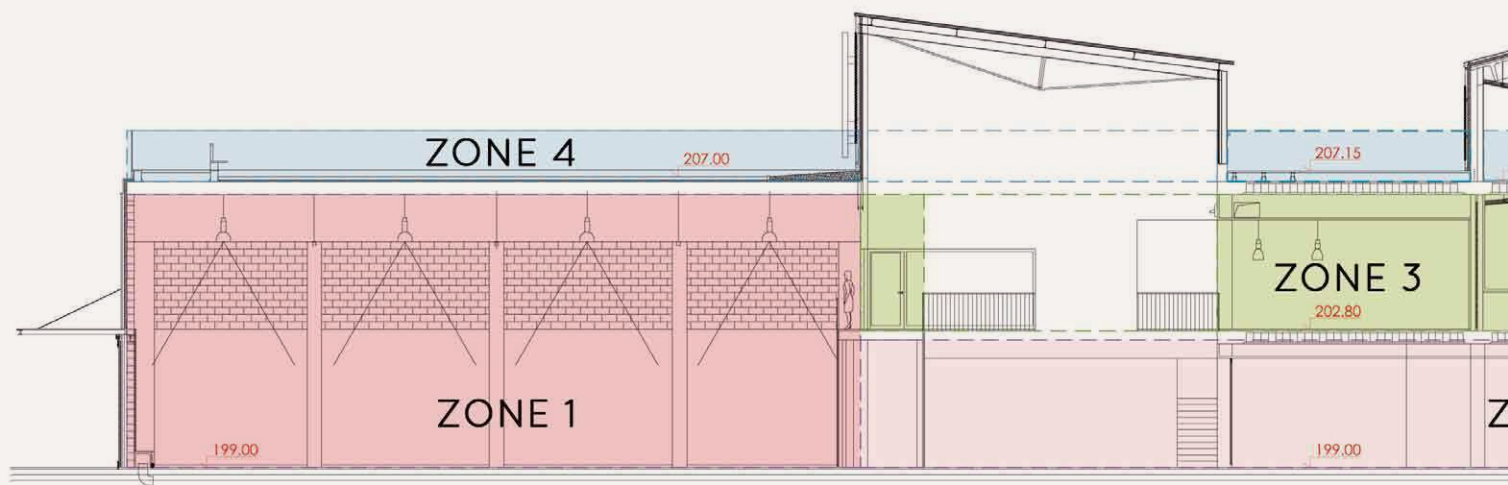
The structure which is already built has a basement, two floors and an upper terrace. The basement has 758,08 sqm, the first floor has 2.762,83 sqm, the second floor has 1.494,50 sqm and the upper terrace has 2.475,34 sqm.

The uses and activities that were planned at the beginning were considered afterwards as over-dimensioned and of a difficult management. In May 2009, a new project was designed. This one modified the first one with the purpose of simplifying its management and reducing the expenses. But this second project also did not thrive.



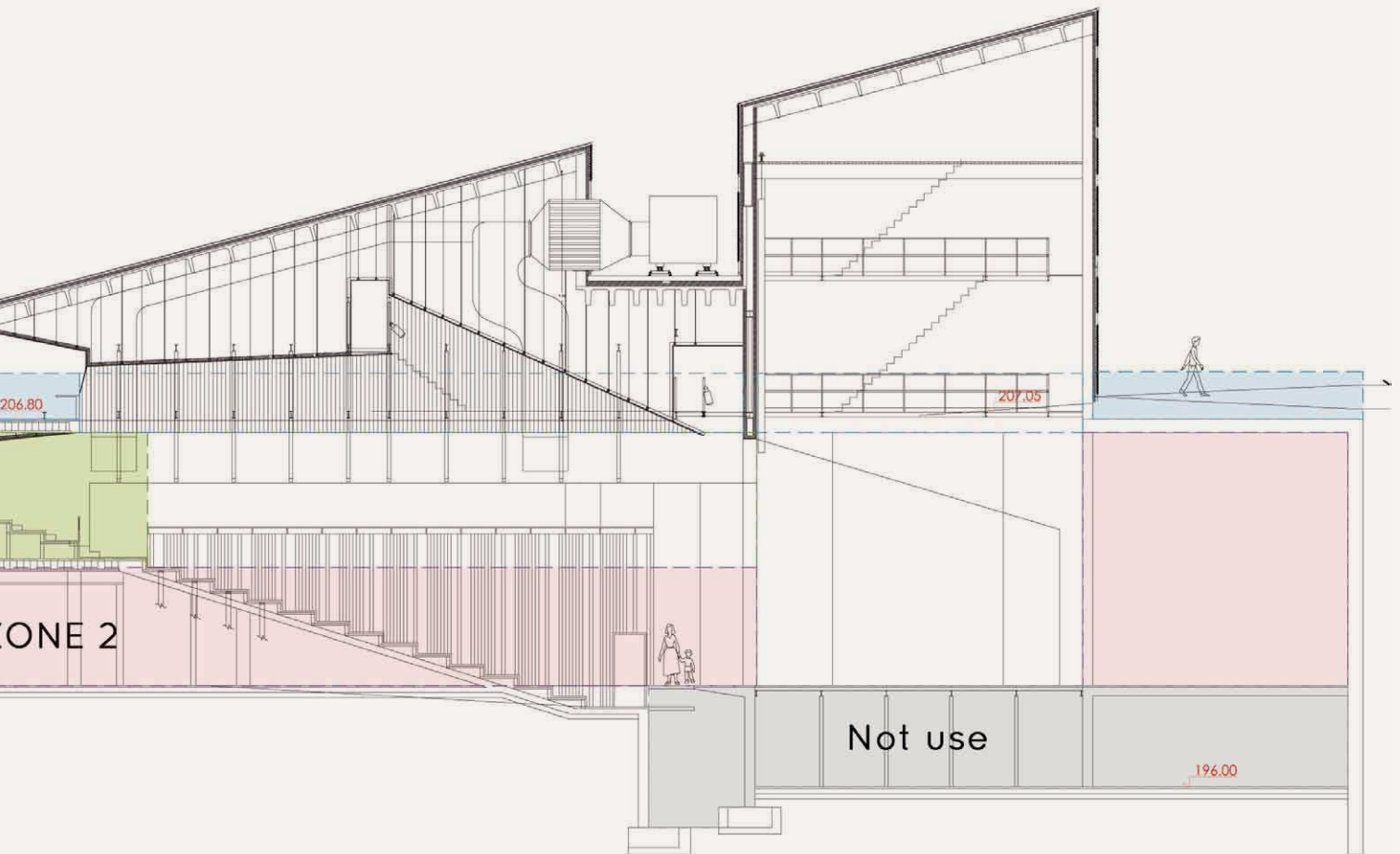
TO DESIGN

A USES PLAN

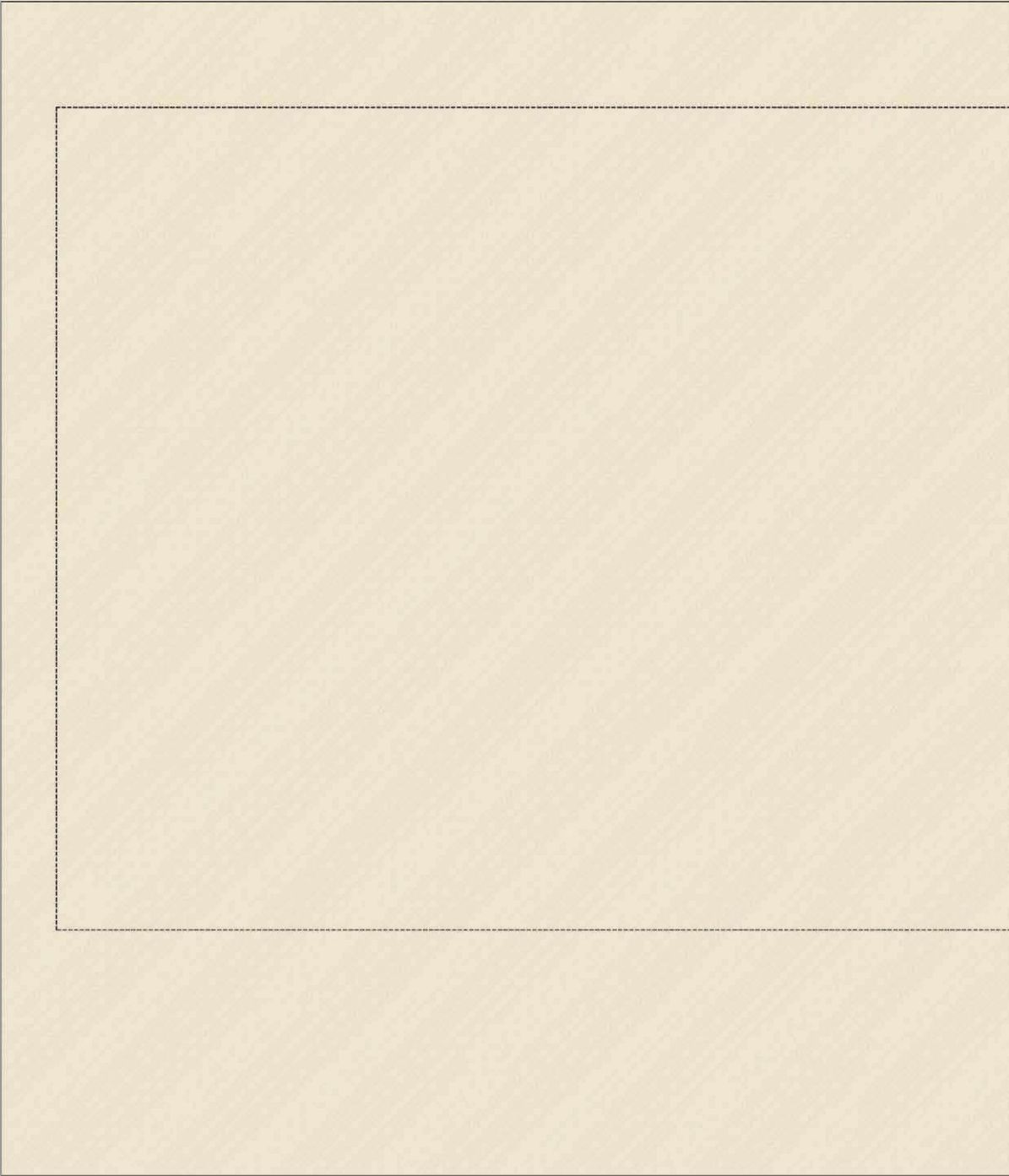


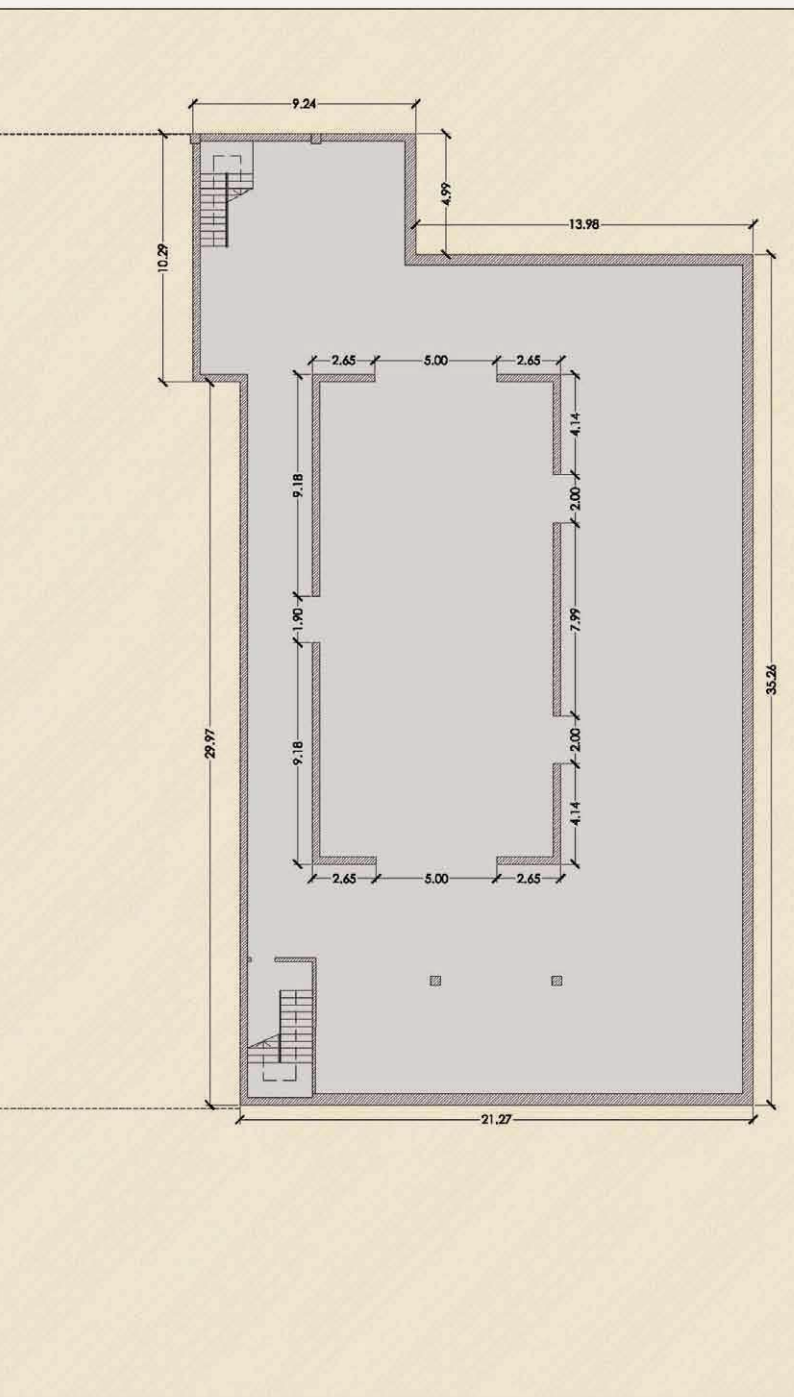
#NOTE

- **Basement.** Not defined uses area.
- **First Floor.** Zone 1. Uses to be defined.
- **Second Floor.** Zone 2. Uses to be defined.
- **First Floor.** Zone 3. Uses to be defined.
- **Upper Terrace.** Zone 4. Uses to be defined.



B A S E M E N T



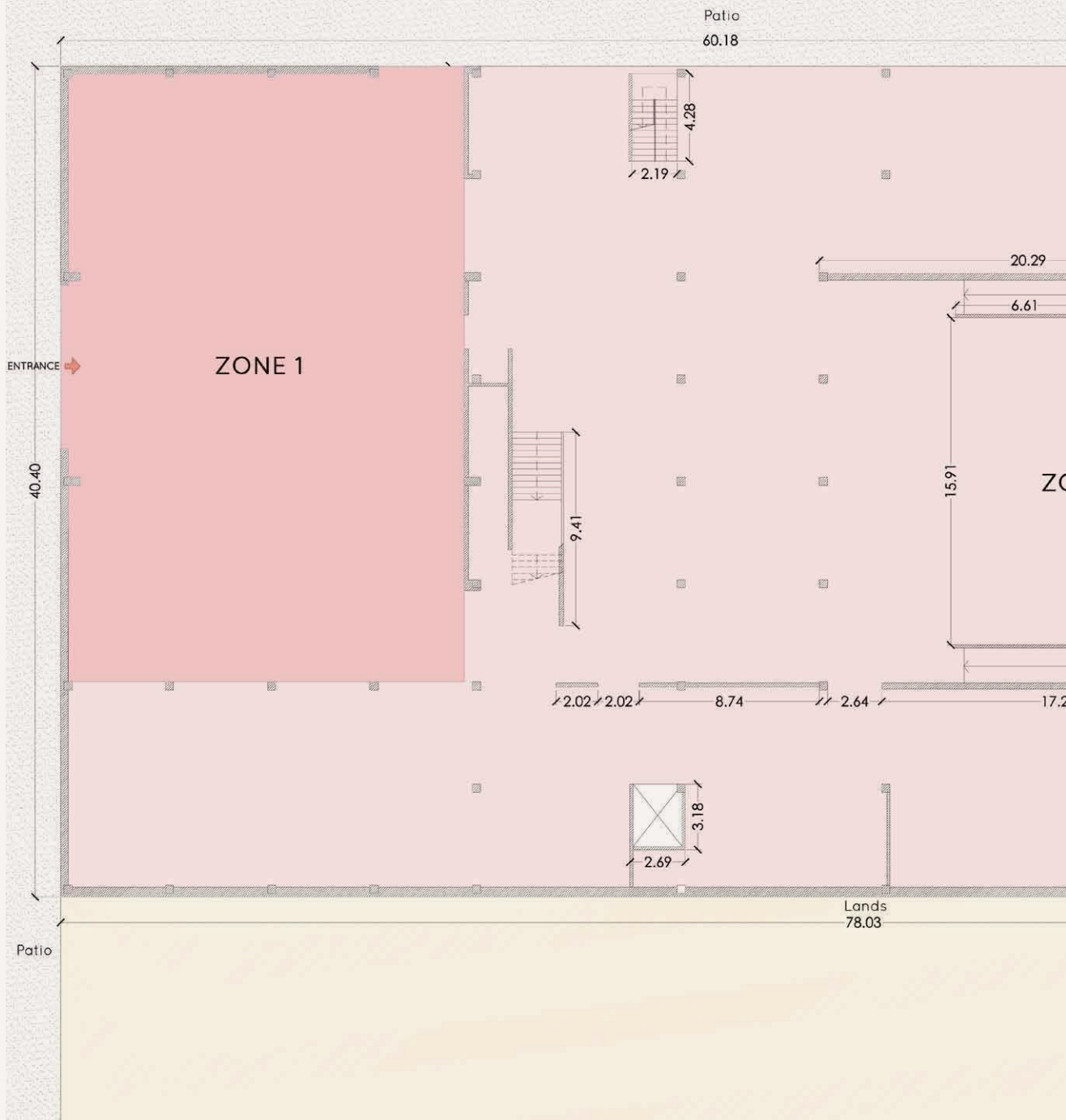


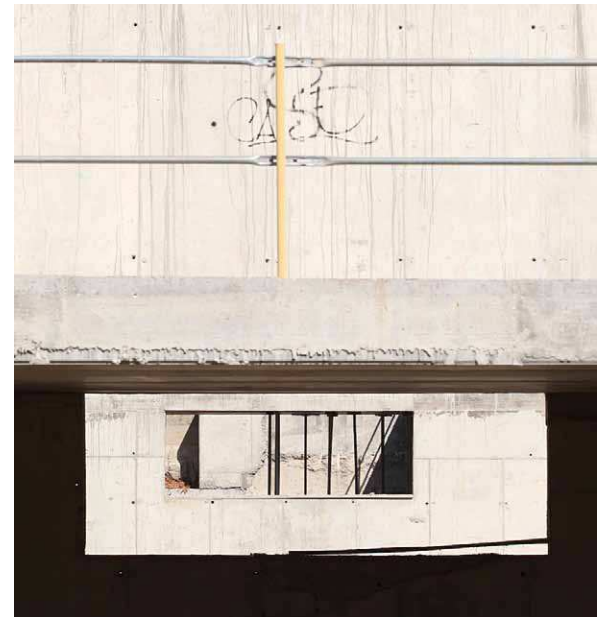
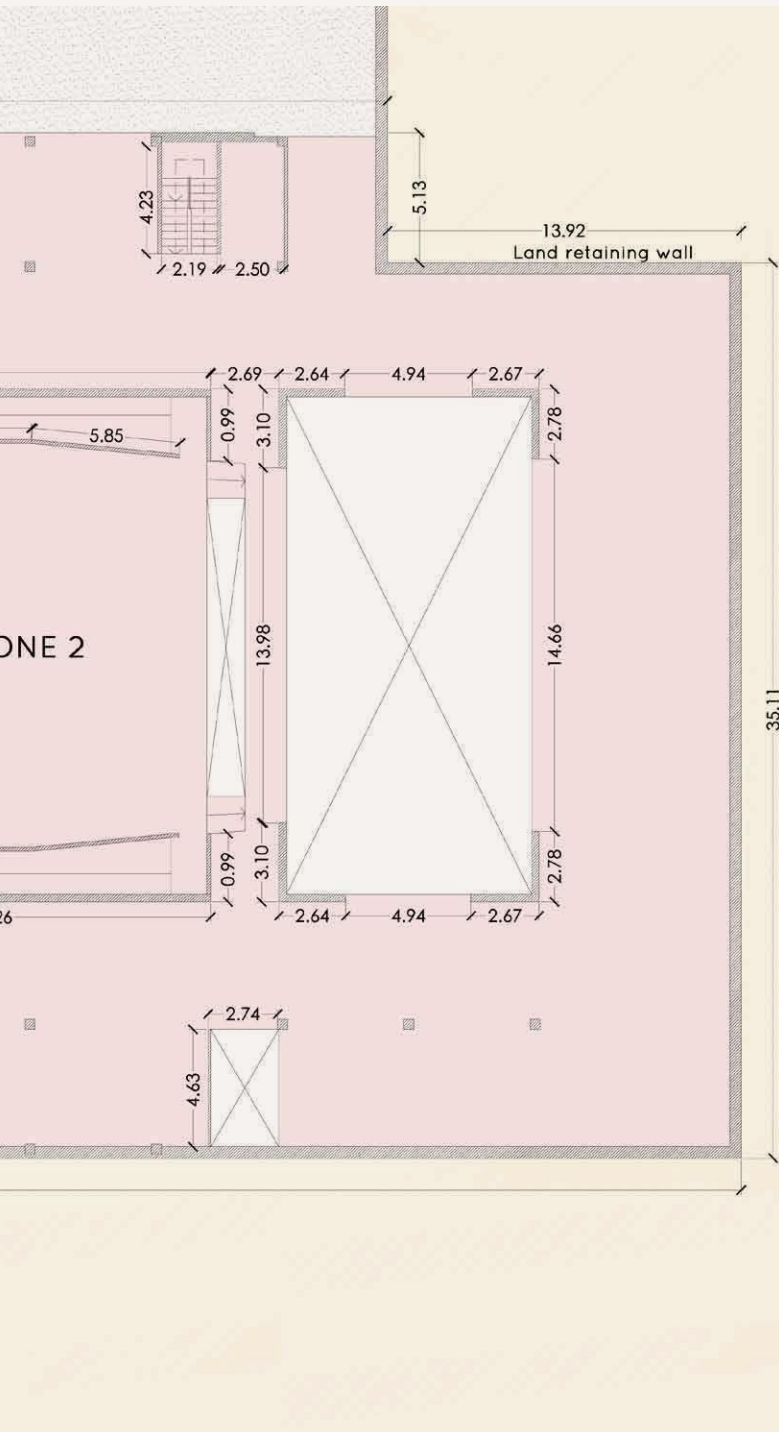
With the **Citizen Participation Process**, all “Franquesins” will define all uses that the Cultural Centre from Corró d’Avall will have, which means that a uses plan will have to be designed.

#NOTE

- Zone whose uses are to be defined (758,08 sqm useful).
- Projection from the first floor. Uses to be defined.

FIRST FLOOR



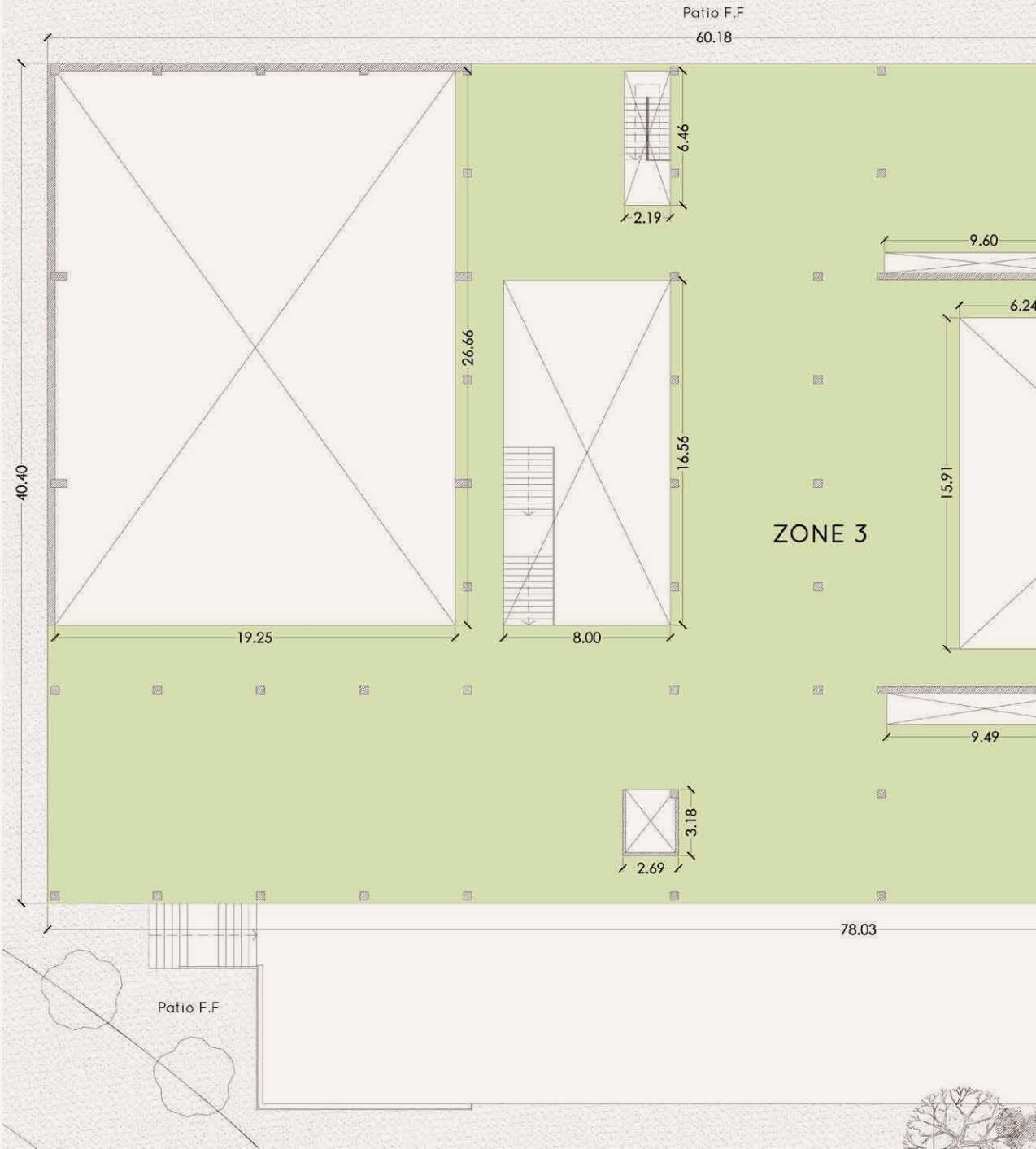


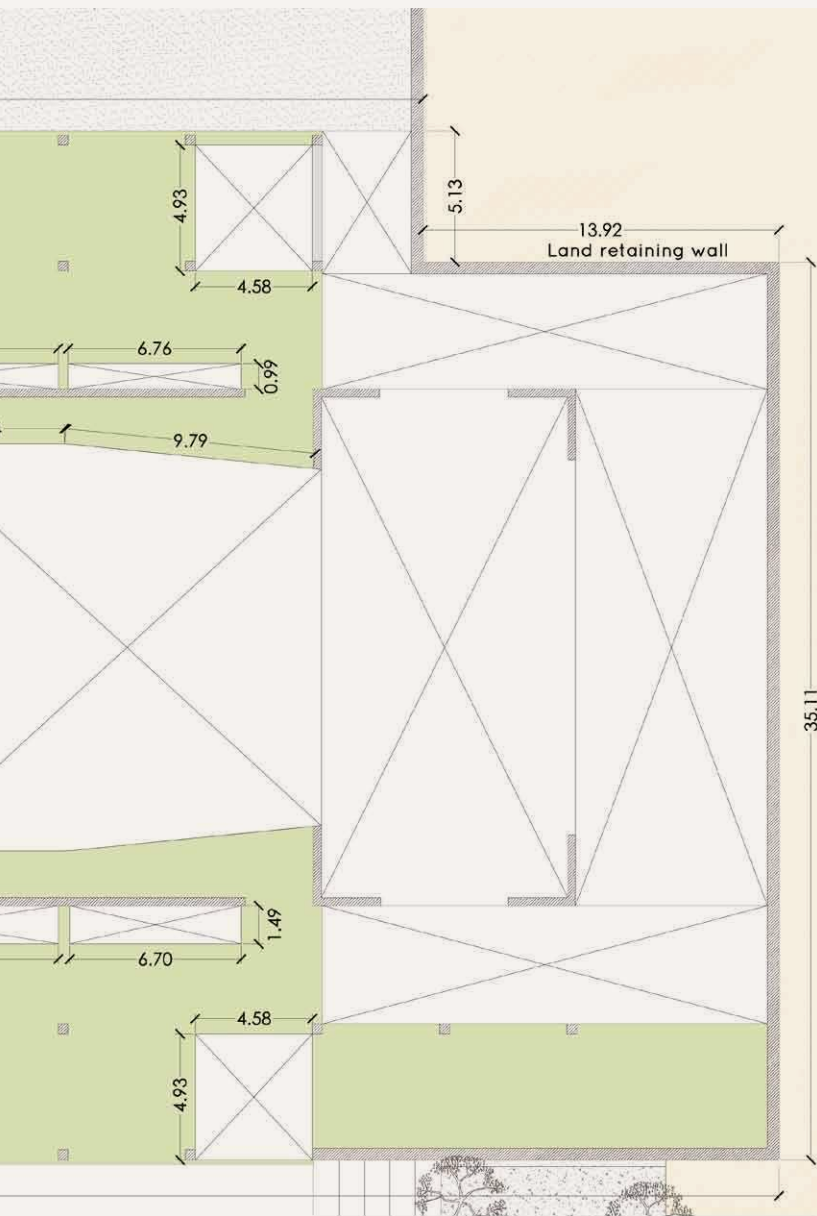
A uses plan is designed to define concepts and criteria for ordering and managing permanent and temporary uses of a building.

#NOTE

- First floor. Zone 1.**
Uses to be defined (573,12 sqm useful).
- First floor. Zone 2.**
Uses to be defined (2.475,34 sqm useful).
- Current holes.**

F I R S T F L O O R



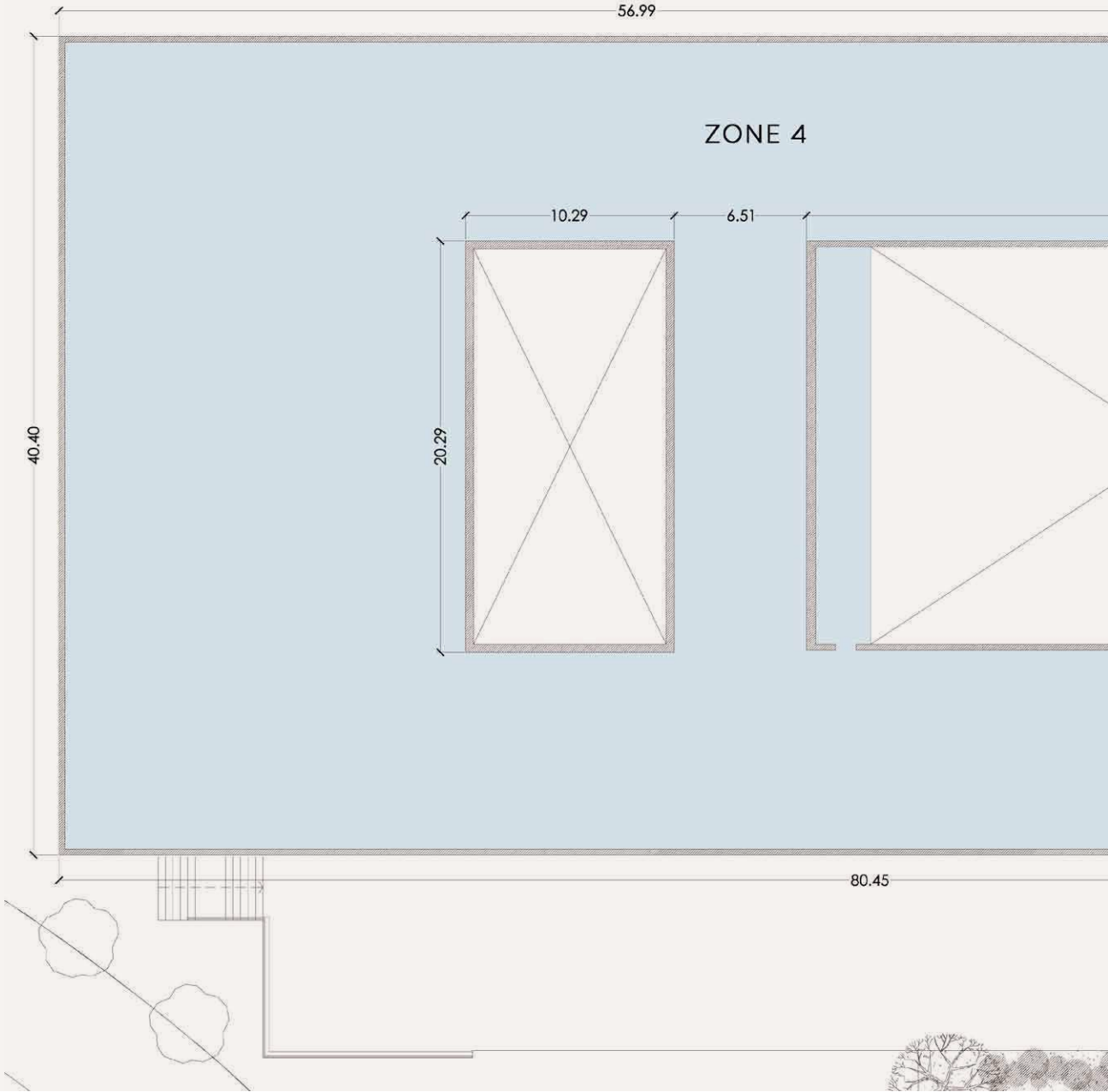


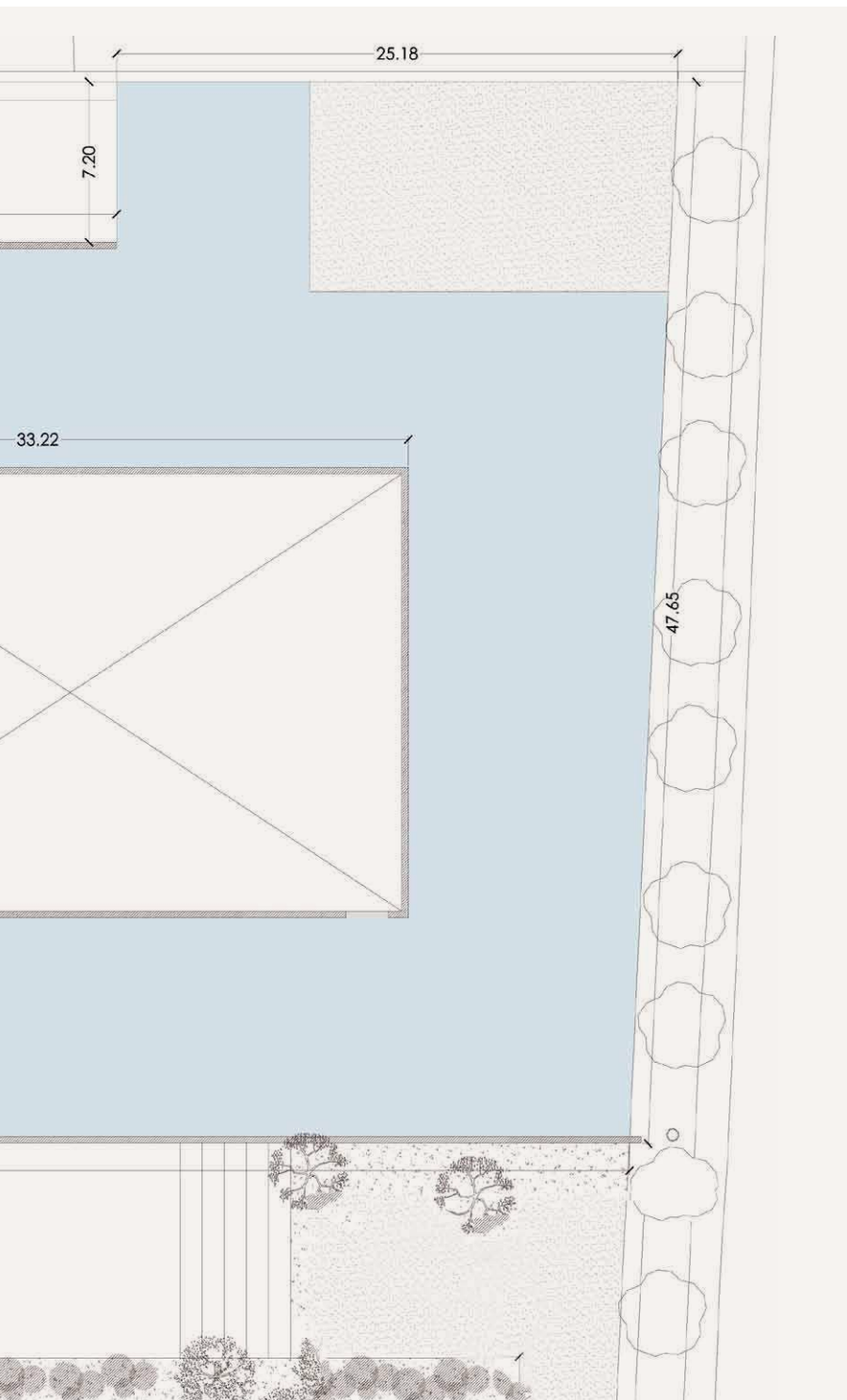
“Centre Cultural de Corró d’Aval” is the name with which the “Franquesin” people identify this building, since it was designed with cultural purposes at the beginning. The desire from the current government team is to redefine the uses of the building. Despite from the word “cultural” used to refer to this Centre, the ideas are open to any different types of proposals.

#NOTE

- First floor. Zone 3.**
Uses to be defined (1.494,50 sqm useful).
- Current holes.**

U P P E R T E R R A C E





#NOTE

■ **Upper Terrace.** Zone 4.

Uses to be defined (2.475,34 sqm useful).

☒ **Current holes.**



TO TAKE PART

IS TO BUILD

LES FRANQUISES

AMONG ALL OF US



T





CITIZEN PARTICIPATION

WHAT ARE WE TALKING ABOUT?

All participation processes are an opportunity to know citizen and town hall positions regarding those topics which impact the town and to reflect all together about what has to be done to afford them.

WHAT IS IT FOR?

The citizen participation promotes meeting and debating points which favour all citizen, entities, social and economy agents, and makes them know each other, speak and develop proposals about different topics related to the town.

WHO IS IT FOR?

The participation is open to everyone: citizen, entities and social and economy agents from the town..

HOW CAN IT BE CONVENIENT TO ALL OF US?

The citizen participation...

- At the moment of designing town policies and performances, it makes it easier when you can consider the people opinions and proposals.
- It improves communication between the Town Hall and the citizen.
- It allows taking decisions having into account different points of view and knowledge.
- It encourages the feelings of involvement and love towards the town.

The purpose of these processes is to listen to people's voice and to give a solution to these projects starting from popular common proposals and which finally, all the people can make use of.



TO DESIGN VIABLE PROPOSALS

In order to design a proposal, many conditions or limitations have to be taken into account:

#01 FLEXIBILITY AND POLYVALENCE

According to the current urban regulations (article 162 from the revision of the General Ordering Plan, approved by the “Comissió d’Urbanisme de Barcelona” on June 18th, 2009), **the possible uses that can be given to the Culture Centre of Corró d’Avall are structures** which can be of public, social and/or common interests.

Examples of possible structures:

- **Cultural:** Theatre, auditorium, library, civic centre, place for entities...
- **Sports:** Gym, multipurpose space.
- **Sanitarian:** Primary Care Centre, geriatric residence...
- **Commercial:** Town market, shopping centre...
- Different types of structures.

It is important to remember that the starting point is from an **already built structure** with a limited scenery.

#02 ECONOMIC DIMENSION

Up to the moment, there are no funds projected to finish this building.
However, as per the final selected proposal, a financial means will have to be developed (subventions from other administrations, own resources, etc.).

#03 ECONOMIC SUSTAINABILITY

In order to have a viable management of the future structure, **it is necessary to keep in mind all maintenance expenses**. In this sense it could be considered the possibility to place activities that generate resources.



I'VE GOT AN IDEA... HOW COULD I TAKE PART?

All people from Les Franqueses can contribute with proposals that show the different uses they want to give to the Cultural Centre from Corró d'Avall. The same way, they can also take part in the final selection process which will be useful for choosing one of the three selected proposals.

The participation process will be divided into three phases:

#01 INTRODUCTION AND COLLECTION OF USAGE PROPOSALS

Everybody who wants can contribute with a proposal of the possible uses they want to give to this building, by filling in a form.

WHEN?

Between **May 1st and June 15th, 2013.**

HOW?

The form to be filled in can be found at:

The local town web page **www.lesfranqueses.cat** (which can be downloaded or directly be filled in and sent on-line).

By filling in the form found in this booklet, in paper format.

At the Citizen Attention Service, "Servei d'Atenció a la Ciutadania" (SAC), at the Town Hall and at Plaça Espanya in Bellavista, in paper format.

WHERE?

The form can be submitted:

Through the local web: **www.lesfranqueses.cat**

Through e-mail: **participa@lesfranqueses.cat**

By showing up (until Friday, June 14th): at the Town Hall, Citizen Attention Service, (SAC), (carretera de Ribes, 2) and in Bellavista, (plaça Espanya, 5). The offices schedule is from Monday through Friday, from 8.30 to 14 h, and on Tuesdays and Thursdays from 16 to 18 h.

#02 ANALYSIS AND ASSESSMENT OF ALL COLLECTED PROPOSALS

An assessment committee will classify all the proposals received and will analyze them. **Three final proposals will be selected**, keeping in mind criteria of sustainability, needs and opportunity, which will be then taken to a voting process.

The assessment committee will be constituted by:

- Government Representatives.
- Technical Representatives from the different areas of the Town Hall.
- Representatives from the different associations of every town nuclei.
- External experts in urban buildings.
- Representatives from the participation process consulting company.

#03 ELECTIONS OF THE THREE FINAL PROPOSALS

All “Franquesin” people over 16 years will be able to take part in the voting process of the final three proposals. The details of this voting process will be specified in mid June.

**CONTRIBUTE
WITH YOUR
PROPOSAL**

P R O P O S E

Fill in the following blanks with your personal information.

In the blank 'Content of the proposal', please describe all different aspects of your proposal. You can also enclose other different complementary documents, if you wish.

Name and surnames

E-mail

Telephone

Interest or availability to be contacted in order to explain the proposal

Content of the proposal (different complimentary documents can be enclosed)

This form has to be taken personally to the offices at the Citizen Attention Service (SAC) of the Town Hall (carretera de Ribes, 2), and in Bellavista (plaça Espanya, 5).

The schedule of the offices is from Monday through Friday, from 8.30 to 14 hours and on Tuesdays and Thursdays from 16 to 18 hours. The deadline to present all proposals at the SAC is Friday, June 14th, 2013.

LEGAL NOTE: The personal information gathered in this document will be used in the way and limits mentioned in the organic law 15/1999 from December 13th, regarding personal data protection. That information given by the users will be included in personal and confidential files from which the Town Hall of Les Franqueses del Vallés is responsible.



P R O P O S E

Continue explaining the content of the proposal





For more information,
contact through:
participa@lesfranqueses.cat

You can also read this booklet in Spanish and in Catalan at www.lesfranqueses.cat



**AJUNTAMENT DE
LES FRANQUESES DEL VALLÈS**

Carretera de Ribes, 2
08520 Les Franqueses del Vallès
Telephone 938 467 676
Fax 938 467 767
aj.franqueses@lesfranqueses.cat
www.lesfranqueses.cat

